



REGIONAL SPECIALISED METEOROLOGICAL CENTRE -TROPICAL CYCLONES, NEW DELHI TROPICAL WEATHER OUTLOOK

DEMS-RSMC TROPICAL CYCLONES NEW DELHI DATED 10.06.2025

TROPICAL WEATHER OUTLOOK FOR THE NORTH INDIAN OCEAN (THE BAY OF BENGAL AND THE ARABIAN SEA) VALID FOR THE NEXT 168 HOURS ISSUED AT 0600 UTC OF 10.06.2025 BASED ON 0300 UTC OF 10.06.2025.

BAY OF BENGAL:

Yesterday's upper air cyclonic circulation over northwest Bay of Bengal and adjoining north coastal Odisha & south Gangetic West Bengal moved inland and now lay over north Odisha & neighbourhood between 1.5 & 5.8 km above mean sea level tilting southwards with height at 0300 UTC of today, the 10th June, 2025.

Yesterday's upper air cyclonic circulation over Southeast & adjoining eastcentral Bay of Bengal has become less marked at 0300 UTC of today, the 10th June, 2025.

Scattered to broken low and medium clouds with embedded intense to very intense convection lay over central Bay of Bengal & north Andaman Sea. Scattered low and medium clouds with embedded moderate to intense convection lay over the rest Bay of Bengal & south Andaman Sea.

*PROBABILITY OF CYCLOGENESIS (FORMATION OF DEPRESSION) DURING NEXT 168 HRS:

24 HOURS	24-48 HOURS	48-72 HOURS	72-96 HOURS	96-120 HOURS	120-144 HOURS	144-168 HOURS
NIL	NIL	NIL	NIL	NIL	NIL	NIL

*NOTE: EVERY 24HR FORECAST IS VALID UPTO 0300 UTC (0830 IST) OF NEXT DAY

ARABIAN SEA:

Scattered low and medium clouds with embedded moderate to intense convection lay over southeast Arabian Sea off Karnataka-Kerala coasts, Lakshadweep Islands, Maldives & Comorin area. Scattered low and medium clouds with embedded isolated weak to moderate convection lay over eastcentral & rest south Arabian Sea

*PROBABILITY OF CYCLOGENESIS (FORMATION OF DEPRESSION) DURING NEXT 168 HRS:

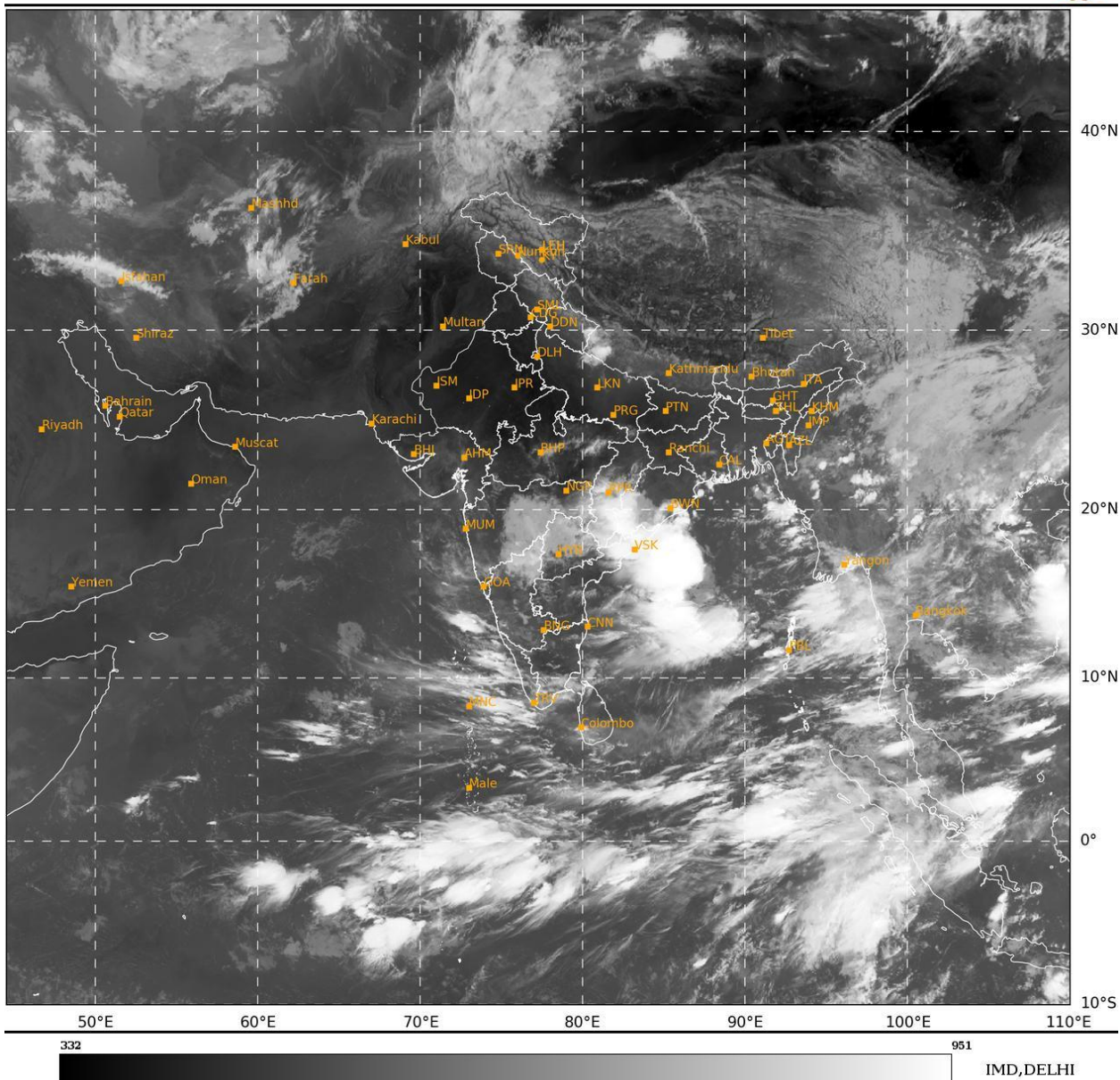
24 HOURS	24-48 HOURS	48-72 HOURS	72-96 HOURS	96-120 HOURS	120-144 HOURS	144-168 HOURS
NIL	NIL	NIL	NIL	NIL	NIL	NIL

*NOTE: EVERY 24HR FORECAST IS VALID UPTO 0300 UTC (0830 IST) OF NEXT DAY

REMARKS: NIL

SAT : INSAT-3DR IMG
 IMG_TIR1 10.8 um
 L1C Mercator

10-06-2025/(0315 to 0342) GMT
 10-06-2025/(0845 to 0912) IST



Cloud distribution: (a) Isolated: <25%, Scattered:25-50%, Broken: 51-75%, Solid:>75%, Convection Intensity: (a) Weak: Cloud Top Temperature(CTT)>-25°C,(b)Moderate:CTT:-25°Cto-40°C,(c)Intense:CTT: -41°Cto -70°Cand(d)Very Intense::Less than -70°C
 PROBABILITYOFCYCLOGENESIS(FORMATIONOFDEPRESSION):NIL:0%,LOW:1-33%,MODERATE:34-66%ANDHIGH:67-100%
 ThisisaguidanceBulletinforWMO/ESCAPPanelMembercountries.VisitrespectiveNationalwebsitesforCountryspecificBulletins